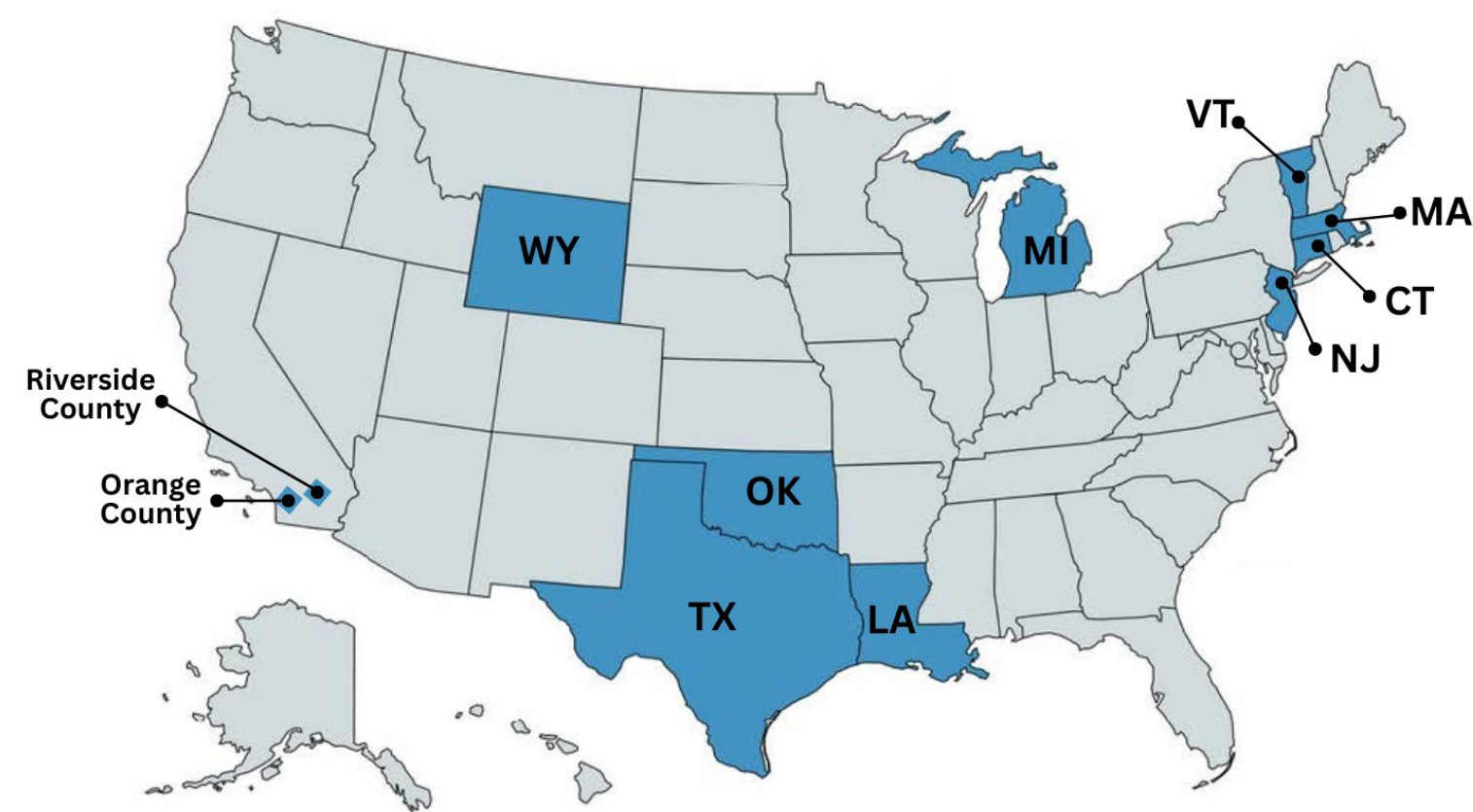


Vermont In-Depth Technical Assistance Initiative



Key Partners

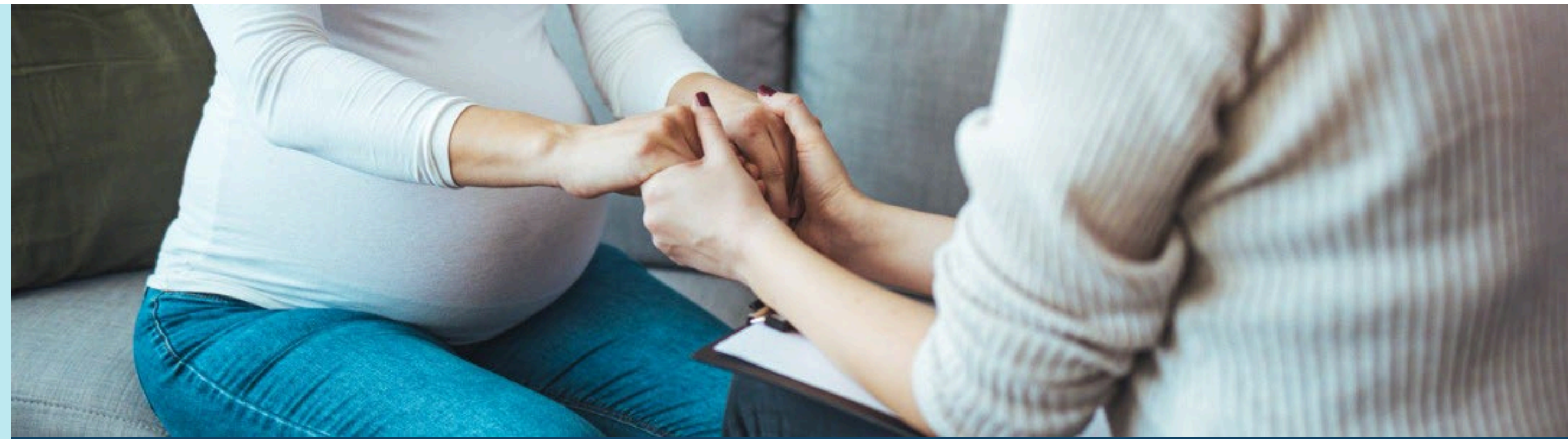
- Department for Children and Families
- Department of Health / Family and Child Health
- Department of Health / Substance Use Programs
- KidSafe Collaborative
- Division of Planning & Court Services, Court Administrator's Office
- University of Vermont Medical Center
- UVM Larner College of Medicine: Vermont Child Health Improvement Program (VCHIP)
- Lund
- Families with lived experience



Current IDTA Sites

- | | |
|---------------|----------------------|
| Connecticut | Texas |
| Louisiana | Vermont |
| Massachusetts | Wyoming |
| Michigan | Orange County, CA |
| New Jersey | Riverside County, CA |
| Oklahoma | |

The map is from the National Center on Substance Abuse and Child Welfare.



Vermont Work Plan Goals

Goal 1: Map existing clinical and community-based services and supports across the state that work with pregnant individuals and families experiencing substance use and identify barriers and gaps in care.

Goal 2: Ensure integration among existing (and new) clinical and community-based services/supports.

Goal 3: Apply a health equity approach to the issue of substance use in pregnancy and in families, including a review of policy and structural factors that contribute to health disparities.

Goal 4: Improve data collection as a strategy to apply quality improvement methods in clinical and community care towards the goal of increased care coordination and systems integration.

Goal 5: Address gaps and concerns related to the current process of developing plans of safe care and CAPTA notifications.



Current Cohort Themes

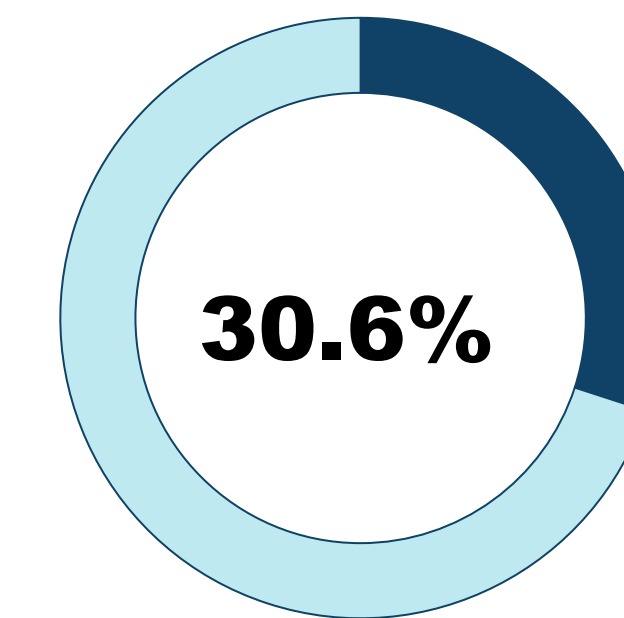
- Wider dissemination and uptake of currently implemented POSC policies and practices
- Alternative notification pathways for infants with prenatal substance exposure
- Need for environmental scan/community mapping to understand gaps and opportunities
- Moving beyond pilots or regional policy and practice to state-wide services
- Establish evaluation framework to assess what works for all families

Vermont Key Data Points

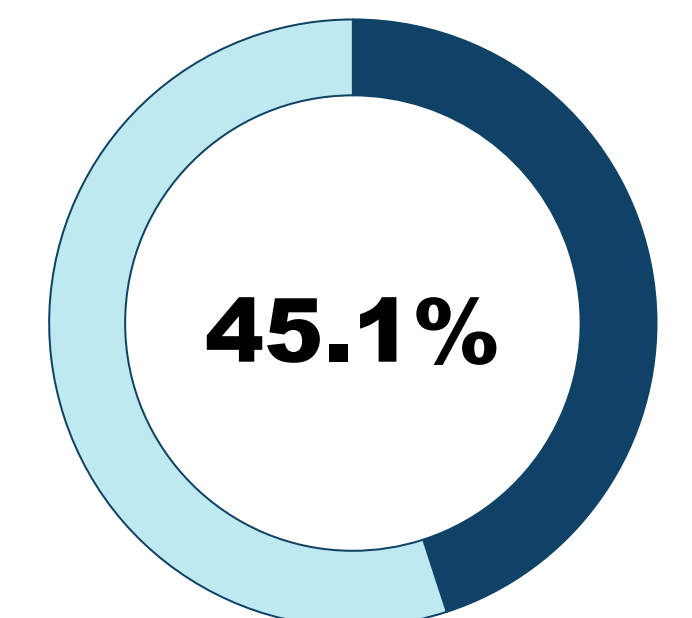
Substance Use and Child Welfare Involvement

2020 Data from the Adoption and Foster Care Analysis and Reporting System (AFCARS)

(Incidence)



Graph 1: Parental substance abuse identified as a condition of removal



Graph 2: % children <1yr with parental alcohol as an identified condition of removal

Prepared by Michelle Shepard, MD, PhD, Angela Zinno, MA, Katy Leffel, RN, BSN, IBCLC, and Julie Parent, MSW on behalf of the Vermont IDTA team.

