

Firestone Medical Research Building Construction Notice #2

October 23, 2020

Construction is off to a great start. Focus over the next two months shifts to the enabling electrical work supporting the installation of a new transformer to service the HSRF and the Firestone buildings. Key events with impact to the LCOM community are:

A portion of Carrigan Drive will temporarily close from 10/29-11/2. Either one lane traffic or an alternate route will maintain emergency vehicle access. Non-emergency vehicle access along Carrigan Drive from the North will stop near the Hills Building, and non-emergency vehicle access from the South will stop near the Jeffords Building (see Figure A below).

Exterior and interior electrical drilling work will generate minimal *yet noticeable* disruption from higher noise levels and minor vibrations primarily in the southern areas of the HSRF basement and level 1 (see Figure B below):

- **Exterior:** route electrical lines from sources in the Given lot and Hills building into HSRF performed during business hours between 10/29-11/2. This work will include core and hammer drilling in HSRF 011, 012, 014, & 016 (see Figure C below).
- **Interior:** installation and routing of electrical conduit in the southern portion of the HSRF basement from early November through mid-December.

Figure A: Carrigan Drive Closure



Figure B: HSRF Level 1 area impacted by sound/vibration:

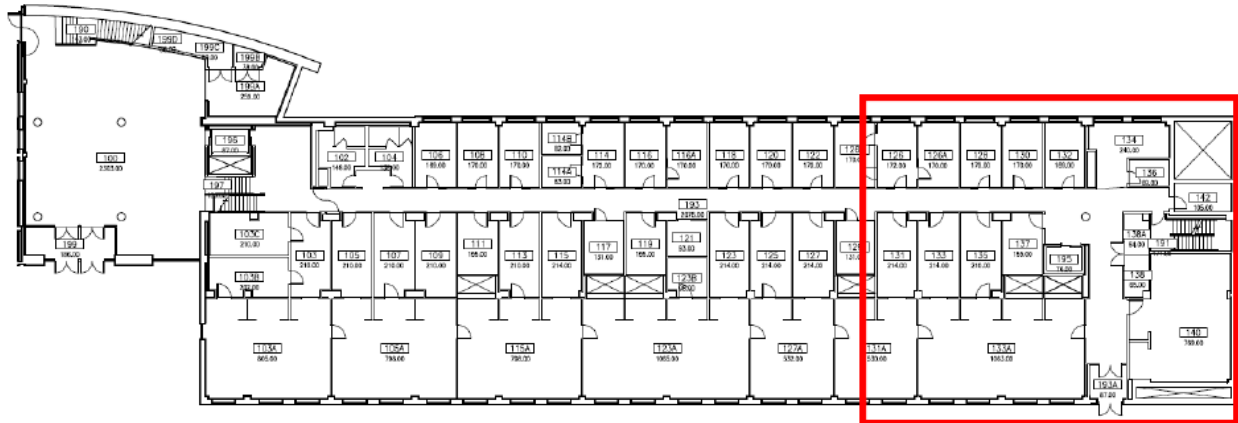
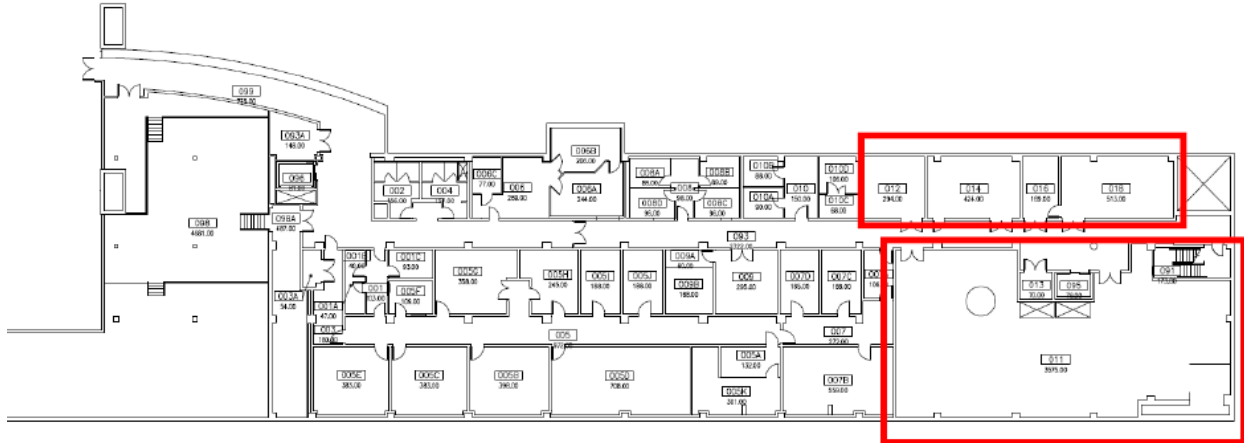


Figure C: HSRF basement area electrical work:



Please visit the LCOM Facilities website for more information at:

<https://www.med.uvm.edu/FirestoneBuilding>

Comments & Questions:

- Email: medicalresearchcomplex.project@med.uvm.edu
- UVM's Office of Planning, Design & Construction (PD&C) Project Manager: Kate Coffey, 6-9777 or Katharine.Coffey@uvm.edu
- LCOM Facilities Administration: Susan Williams 6-9459 or Susan.L.Williams@med.uvm.edu