

University of Vermont Project ECHO Pediatric Mental Health: Complex Cases and Deeper Dives



COURSE DESCRIPTION:

This series will explore the diagnosis, treatment, and multidisciplinary care of pediatric patients with complex mental health presentations. The program will identify and teach collaborative strategies, best practices, screening tools, resources, and clinical pearls to apply to the primary care setting. The series will include the Project ECHO model essentials - brief didactics, case-based learning and group discussion – in a format designed to allow for deeper exploration of series topics. Woven throughout will be secondary themes of interdisciplinary collaboration, suicide prevention, and family-based care.

LEARNING OBJECTIVES INCLUDE THE ABILITY TO:

- Develop enhanced diagnostic and assessment skills in the care of pediatric patients presenting with ADHD symptoms in the setting of toxic stress.
- Define trauma-responsive care as it relates to the pediatric population.
- Identify effective practice and communication skills for families who have experienced intergenerational and/or complex developmental trauma.
- Explain best practices for gender affirming care for youth, including risk factors, ways to enhance protective factors, and affirmative practices to enhance provider/patient relationships.
- Apply skills in early recognition, medical monitoring, and care coordination for youth with anorexia nervosa in the context of limited access to specialized care.

This series is offered at no-cost to participants through a grant from the Vermont Department of Health. Participants can receive CME for each session attended.

SERIES DATES – 2ND THURSDAY OF THE MONTH FROM 12:00 TO 1:00PM

WHO SHOULD ATTEND?	DATES	DIDACTIC TOPICS (in addition to case review)
The target audience is Pediatric and Family Medicine practice teams in Vermont. We suggest at least one primary care provider and at least one nurse, social worker, or other mental health focused team member.	October 12	ADHD Symptoms in the Setting of Toxic Stress for Younger Patients Greta Spottswood, MD
	November 9	Deeper Dive into ADHD Symptoms in setting of Toxic Stress Greta Spottswood, MD
	December 14	Complex Developmental Trauma and Trauma-Responsive Care: An Intergenerational Approach Colleen Victor, MD and Sara Schnipper, MSW
	January 11	Deeper Dive into Complex Developmental Trauma and Trauma-Responsive Care Haley McGowan, DO and Sara Schnipper, MSW
	February 8	Supporting Trans Youth: Collaborative Approaches to Gender Affirming Care Madison Smith, PsyD
	March 14	Deeper Dive into Collaboratively Supporting Trans Youth Madison Smith, PsyD
	April 11	Managing Anorexia Nervosa in the Primary Care setting: Awareness, Monitoring, and Access to Specialized Care Erica Gibson, MD
	May 9	Deeper Dive into Managing Anorexia Nervosa in the Primary Care Setting Erica Gibson, MD

TO REGISTER

Register by Friday, September 29, 2023: <https://redcap.med.uvm.edu/surveys/?s=E3C7HT3Y8LPMF7DC>.

This program has limited enrollment. We encourage primary care teams to send multiple members; each participant must register individually. Registration closes and the cohort will be finalized on September 29, 2023.

General questions about the University of Vermont's Project ECHO can be directed to Patti.Smith-Urie@uvm.edu. Clinical/topic-specific questions can be directed to Haley.McGowan@uvmhealth.org.

About Project ECHO

This program uses the Project ECHO model™. **Project ECHO**® (Extension for Community Healthcare Outcomes) is an evidence-based interactive distance-learning method developed by researchers at the University of New Mexico. During teleECHO™ sessions, experts and peers share their expertise across a virtual network via case-based learning, enabling practice teams to treat patients with complex conditions in their own communities.

Each virtual learning session includes a brief lecture, a case presentation, and discussion. Participants commit to:

- Participate in each Project ECHO case-based learning session, using a virtual meeting platform (see program schedule);
- Use a webcam to participate face-to-face in each session (this is a core element of the Project ECHO model);
- Submit case(s) and present them to the group;
- Complete an evaluation survey at end of each session; and
- Provide requested evaluation feedback at the end of the full program.

Learn more about UVM Project ECHO by visiting vtahec.org.

Other UVM Project ECHO 2023-2024 Series:

UVM Project ECHO: Primary Care Mental Health Advanced Series

Course Co-directors: Sara Pawlowski, MD and Mark Pasanen

- Every other Wednesday 12:00-1:30
- FALL SERIES: **Mental Health Advanced Series: Depression in Primary Care** (September 6 – December 13, 2023)
- SPRING SERIES: **Mental Health Advanced Series: Anxiety in Primary Care** (February 7- May 1, 2024)

UVM Project ECHO: Dementia Diagnosis and Care for the Primary Care Team

Course Co-directors: Mary Val Palumbo, DNP, APRN, GNP-C and John Taylor, MD

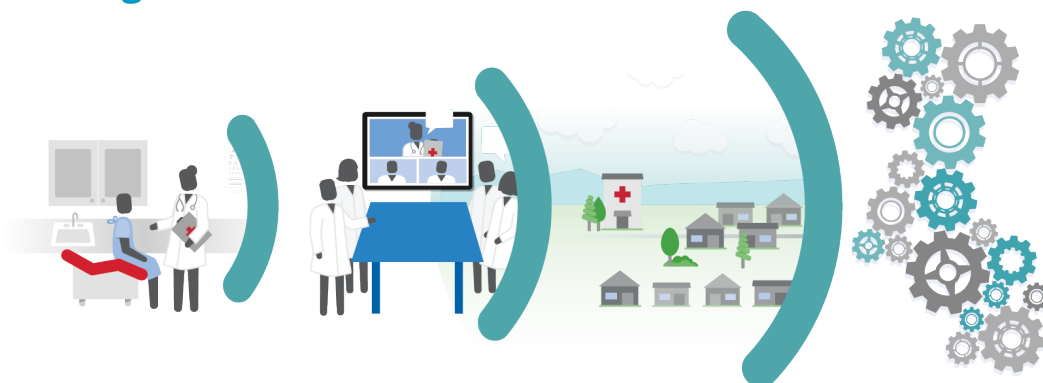
- 2nd and 4th Thursdays 7:30-9:00AM
- FALL SERIES: **Dementia Diagnosis and Care for the Primary Care Team** (September 14 - November 9, 2023)
- SPRING SERIES: **Advanced Topics in Dementia Care for the Primary Care Team** (February 8- May 2, 2024)

UVM Project ECHO: Current Topics in School Nursing

Course Director: Kathy Mariani, MD, MPH

- Monthly, Wednesdays 3:15-4:45
- October- February, 2024

Project ECHO: Doing More for More Patients



PATIENT

- Right Care
- Right Place
- Right Time

PROVIDER

- Acquire New Knowledge
- Treat More Patients
- Build Community of Practice

COMMUNITY

- Reduce Disparities
- Retain Providers
- Keep Patients Local

SYSTEM

- Increase Access
- Improve Quality
- Reduce Cost